

2020 Speakers



Graeme Rutter (Chair)
*Head of Schroder Real Estate
Capital Partners*
Schroder Real Estate
Investment Management



Alexandra Lanni
*Head of Transactions and a
Co-Principal*
Laxfield



Andrew Antoniadou
*Executive Director, Head of
Lending, Investment Advisory,
Capital Advisors*
CBRE



Anna Shiel
Head of Origination
Big Society Capital



Claire Magowan
*Joint Head of Portfolio
Valuation*
Savills



David Willock
*Head of Structuring, Real Estate &
Housing, Large Corporates*
Lloyds Banking Group



Hein Wegdam
*Director of Sustainable Real Estate
Products, Global Real Estate Finance*
ING Bank N.V.



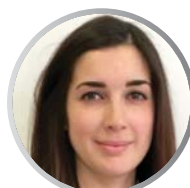
Karen Shackleton
Senior Adviser, MJ Hudson
**Allenbridge and Founder,
Pensions for Purpose**



Karl L. Wambach
*Executive Vice President,
Europe*
Brookfield Properties



Kevin Beirne
*Director, Retirement
Communities*
Octopus Real Estate



Kirsty Garrett
*Associate Director, Corporate
Debt Capital Markets*
Lloyds Banking Group



Mark Bourgeois
Managing Director
Hammerson



Matthew Richardson
Director and Co-Founder
Didobi



Mujtaba Rahman
Managing Director for Europe
Eurasia Group



Rekha Unnithan
Lead Impact Portfolio Manager
Nuveen Real Assets



Sarah Harper
Clore Professor of Gerontology
University of Oxford



Simon Jones
*Partner and Head of
Responsible Investment*
Hymans Robertson



Simon Mallinson
Executive Managing Director
Real Capital Analytics



Paul Redmond
*(Pre-Dinner Speaker)
Director of Student Experience
and Enhancement*
University of Liverpool

To book your place, please **complete the form** and email to
conference@ipf.org.uk

Speaker Profiles



Chair

Graeme Rutter

Head of Schroder Real Estate Capital Partners

Schroder Real Estate Investment Management

Graeme Rutter has 25 years' investment experience and is currently Head of Schroder Real Estate Capital Partners, with over £4bn of assets under management (June 2019).

He joined Schrodgers in 2007, having spent the previous three years as Fund Manager responsible for Morley (now Aviva) Fund Management's property multi-manager team. Graeme commenced his career with Weatherall Green and Smith in 1994, specialising in valuation, before moving to Savills in 1998 where he was Director, Investment Agency.

Graeme is the national Chairman of the IPF and also chairs the IPF Indirect Property Special Interest Group. He is a member the MSCI UK Real Estate Advisory Group and the immediate past Chairman of the Association of Real Estate Funds (AREF) Investor Committee and Management Committee member.

He is a member of the RICS and has also passed the full IMC.



Alexandra Lanni

Head of Transactions and a Co-Principal

Laxfield

Alex is Head of Transactions and a Co-Principal at Laxfield, focusing on deal origination, structuring and execution. During her time at Laxfield, she has closed more than £1.5bn of lending, covering a wide variety of senior and structured deals in the residential, office, hotels, retail and logistics sectors.

Completing her chartered accountancy qualification at PwC, during which time she acted in both an audit and advisory capacity, Alex focused mainly on life assurance companies and listed investment funds. In 2006, she joined the Bank of Scotland, analysing and documenting new European real estate lending and joint venture opportunities. From 2008 onwards, Alex restructured and recovered a number of legacy commercial real estate loan positions.



Andrew Antoniadou

Executive Director, Head of Lending, Investment Advisory, Capital Advisors

CBRE

Andrew is an executive director at CBRE. He established and leads the Lending platform in the Investment Advisory group, and has overseen more than £800m of lending into the market on behalf of CBRE's debt mandates. He works with investors and specialises in enabling them to deploy their capital as debt, formulating specific investment strategies.

Andrew manages a portfolio of private and public institutional debt mandates, totalling £1bn across various strategies, including investment and development lending. He oversees several government-backed regional debt funds, including the North West Evergreen Fund and the Northern Ireland Investment Fund.

He is an investment advisor to several private institutions with separate debt investment mandates, including Daiwa Capital Markets. These segregated lending programmes range from £100m to £300m of debt.

Speaker Profiles



Anna Shiel

Head of Origination

Big Society Capital

As Head of Origination at Big Society Capital (BSC), Anna has been involved in a range of investments and projects, with particular experience in social banks, social property funds and community investment.

She now leads BSC's work investing in homes as well as in communities and place, and is a member of BSC's Investment Committee. The Homes team is exploring how impact investment can be used to create a more inclusive housing market that provides high quality, secure and affordable housing so people can lead better lives.

Anna was previously a director in Merrill Lynch's Financial Institutions Group where she advised UK banks and insurers on strategy, IPOs, mergers and acquisitions.



Claire Magowan

Joint Head of Portfolio Valuation

Savills

Claire is Joint Head of the Portfolio Valuation team at Savills, managing the regular valuation of diverse property portfolios situated throughout the UK on behalf of a variety of clients. Claire has concentrated on her specialist discipline of property portfolio valuation since 2000.

She is recognised as an expert in the field of regular valuation, providing accurate and timely advice across all sectors to a diverse base of clients, including institutions, property companies and high net worth individuals.

In addition to her role, Claire is a member of the Savills valuation executive and sits on the Tangible Assets Board of the International Valuation Standards Council. She has recently been appointed to Savills Client Relationship Management Board.



David Willock

Head of Structuring, Real Estate & Housing, Large Corporates

Lloyds Banking Group

David Willock is Head of Structuring, Real Estate & Housing, Large Corporates at Lloyds Banking Group, where he has originated, structured and managed over £3bn of UK real estate loans.

David's experience ranges from private equity, institutional funds and listed counterparties, providing large complex debt funding solutions through to SME lending. He holds both regional and London perspectives, having built and led Midlands & South West-based debt franchises, at two major real estate lending institutions.

Most recently, David has focused on sustainability in the built environment, including leading the £1bn Lloyds Bank Green Lending Initiative and the pilot of a new sustainability app for real estate assets.

He also works on initiatives relating to diversifying real estate funding sources, including working with Scottish Widows to deploy longer term lending and the creation of a debt platform to facilitate third party participation in Lloyds originated real estate loans.

Speaker Profiles



Hein Wegdam

Director of Sustainable Real Estate Products, Global Real Estate Finance
ING Bank N.V.

Hein is based in the ING Bank's headquarters in Amsterdam in their Real Estate Finance department. He is responsible for developing sustainable and innovative real estate products for ING's worldwide real estate clients, whilst promoting sustainable development for the industry as a whole.

Hein created and helped structure the first global GRESB-linked Sustainability Improvement Loan, which was announced in March 2018. This transaction was the first in the real estate sector.

More recently, Hein has worked with 10 of the biggest valuation agencies, as the initiator of a sustainability valuation model, which indicates the indirect value of sustainability in office buildings.



Karen Shackleton

Senior Adviser

MJ Hudson Allenbridge

Founder

Pensions for Purpose

Karen has worked in the finance sector for over 30 years. She provides independent investment advice, through MJ Hudson Allenbridge, to the London Boroughs of Islington, Camden and Hounslow, and Warwickshire County Council pension funds. In 2017, she set up Pensions for Purpose, a collaborative information-sharing platform which aims to raise awareness of impact investment amongst pension funds.

She is a non-executive Chair of Resonance Ltd, a firm investing in real estate social impact opportunities, Deputy Chair of the Strategic Investment Board for the Ministry of Justice and was a member of the UK National Advisory Board on impact investment prior to it recently becoming the Impact Investing Initiative.



Karl L. Wambach

Executive Vice President, Europe

Brookfield Properties

Mr. Wambach is Executive Vice President and responsible for Brookfield Properties in the UK and Germany.

Prior to joining Brookfield, he was Managing Director and Head of Asset Management of Hines Germany. While at Hines, he served on the firm's Operations and Management Committee in Houston, Texas. Over his career he contributed to the acquisition of approximately 9m square feet of quality real estate.

Previous experience also includes real estate banking in Munich and Dublin. He received a BBA from St. Edward's University, and a MBA from the University of Texas at Austin.

Speaker Profiles



Kevin Beirne

Director, Retirement Communities

Octopus Real Estate

Kevin is a member of the Octopus Real Estate Investment Committee and is responsible for raising funds to facilitate the development of high-quality retirement communities that meet the high standards of the UK's ageing population.

Before joining Octopus Real Estate, Kevin was a board member at One Housing Group, where he led the healthcare business from 2002. Kevin completed 44 developments and invested over £500m into class leading assets and joint ventures with the NHS.

Kevin has over 25 years of experience in the healthcare sector. He is a founding member of The Associated Retirement Community Operators and served on the board of the Housing Community Association (HCA) as well as the National Housing Federations Development Committee.



Kirsty Garrett

Associate Director, Corporate Debt Capital Markets

Lloyds Banking Group

Kirsty Garrett is an associate director in the Corporate Debt Capital Markets team at Lloyds Bank, covering real estate and social housing issuers, across public bonds and US private placements.

Kirsty has experience in interest rates, FX and commodities risk management. She has responsibility for Green and Sustainable Bonds at Lloyds Bank and she developed the updated Lloyds Bank Sustainability Bond Framework, published in May 2019, to support the bank's own sustainable funding.

Kirsty has worked at Lloyds Bank for 9 years and has completed the CFA programme. Prior to joining Lloyds Bank, she studied Economics at the University of Sheffield.



Mark Bourgeois

Managing Director

Hammerson

Mark Bourgeois is Managing Director of UK & Ireland at Hammerson, responsible for the company's £6.5bn shopping centre and retail parks business.

Mark began his career at KPMG; he then qualified as a chartered surveyor with Donaldsons, where he became partner in charge of the London Shopping Centre Management team. Mark moved to Capital & Regional in 1998 where, as Executive Director, he led the management and development of their substantial shopping portfolio.

Mark chairs the UK & Ireland Management Board and sits on the CR Board, IT Steering, Risk & Controls & Health & Safety Committees.

Speaker Profiles



Matthew Richardson

Director and Co-Founder

Didobi

Matthew Richardson is Co-Founder of Didobi and has more than 30 years' experience of working in the European, US and Asian investment property markets.

Between March 2007 and September 2017 he was the Director of Research - European Real Estate, at Fidelity International in London, where he was responsible for establishing the award-winning research, strategy and risk management processes for their European real estate funds. Prior to joining Fidelity, he was Head of Property Finance at Experian Business Strategies in the UK and an executive director at Freeman Business Information.

Matthew has held a variety of roles, including Founder and Managing Director at Property Market Intelligence in Hong Kong; Director - Asia Operations at Dow Jones Teleres and Regional Research Director - Asia Pacific at Brooke Hillier Parker (now CBRE).



Mujtaba Rahman

Managing Director for Europe

Eurasia Group

Mujtaba is Managing Director for Europe at Eurasia Group and leads the firm's analysis on Europe, helping clients navigate elections, Brexit, EU-Turkey dynamics, bailout politics in Greece and European Central Bank politics and policy, to name a few recent issues.

Prior to joining Eurasia Group, Mujtaba worked at the European Commission's Directorate-General for Economic and Financial Affairs and at the UK Treasury.

He is an adjunct professor at New York University's Stern Business School and Sciences-Po in Paris, as well as a visiting fellow at the London School of Economics, and teaches political risk to graduate students at all three institutions. He is regularly quoted in the Financial Times, New York Times, Wall Street Journal, Economist, Bloomberg and many other publications.



Rekha Unnithan

Lead Impact Portfolio Manager

Nuveen Real Assets

Rekha is Impact Investing Portfolio Manager at Nuveen Real Assets. Rekha is responsible for determining Nuveen's Impact Investment strategy across sectors, asset classes and regions. She originates and underwrites new deals and manages impact investments to execute Nuveen's commitment across thematic areas of Affordable Housing, Inclusive Growth and Resource Efficiency. Rekha oversees a multi-asset class impact investing portfolio which includes private equity, private real estate, mortgages and fund investments.

Prior to joining Nuveen in 2012, she worked for Bank of America Merrill Lynch as a vice president in their Institutional Investment Group.

Rekha is a board member of Aeris, a non-profit organisation that helps investors make and monitor missions investments. She also serves on the advisory boards of the Global Impact Investing Network's Institutional Investor Initiative and the International Finance Corporation's Operating Principles of Impact Investing.

Speaker Profiles



Sarah Harper

Clore Professor of Gerontology

University of Oxford

Sarah is Clore Professor of Gerontology at the University of Oxford, a Fellow at University College, and the Founding Director of the Oxford Institute of Population Ageing. Sarah served on the Prime Minister's Council for Science and Technology, which advises the Prime Minister on the scientific evidence for strategic policies and frameworks. In 2017 she served as the Director of the Royal Institution of Great Britain. Sarah is a Director and Trustee of the UK Research Integrity Office and a member of the Board of Health Data Research UK. Sarah was appointed a CBE in 2018 for services to Demography.

She chaired the UK government's Foresight Review on Ageing Populations (2014-2016) and has chaired the Evaluation board of the Active Ageing Index for the EC/UNECE Population Board since 2015. She is a Governor of the Pensions Policy Institute. She is a Fellow of the Royal Anthropology Institute. Sarah's research was recognized by the 2011 Royal Society for Public Health: Arts and Health Research Award.



Simon Jones

Partner and Head of Responsible Investment

Hymans Robertson

Simon is Partner and Head of Responsible Investment at Hymans Robertson. In this role, Simon leads the development of the firm's approach to advising clients on responsible investment matters and has worked with various organisations on the development and implementation of responsible investment policy.

Simon has over 25 years' pensions and investment experience, is a fellow of the Faculty of Actuaries and the current Chair of the IFoA Resource & Environment Board. Simon has a Masters in Ecological Economics from the University of Edinburgh.



Simon Mallinson

Executive Managing Director

Real Capital Analytics

Simon Mallinson is Executive Managing Director at Real Capital Analytics (RCA). Based in London, Simon has responsibility for RCA's EMEA and APAC businesses, with a passion for developing RCA's industry-leading client service and capital markets analytics. Simon is a regular commentator on global real estate trends.

Previously, Simon was Senior Director leading European Research at Invesco Real Estate. Prior to Invesco, Simon held several roles with IPD (now MSCI) in London and the US. As Chicago-based Head of US Services, he established IPD's first North American office.

Simon is a Board Member of the US association NCREIF, a member of RICS and is active across other global real estate associations. He holds degrees from Leeds and Manchester universities.

Speaker Profiles



Pre-dinner speaker

Paul Redmond

Director of Student Experience and Enhancement

University of Liverpool

Paul is Director of Student Experience and Enhancement at University of Liverpool. He is also an author, keynote speaker and employment guru, being one of the UK's leading experts on generational change and the future of work.

Paul presents at numerous conferences and events - helping organisations and professionals acquire the skills and knowledge to thrive in today's multi-generational workplace. Paul has held visiting lectureships at various leading universities and has been responsible for guiding the careers of thousands of students and graduates.

Paul writes regularly for national newspapers and other publications and is a frequent guest on radio and TV programmes, appearing regularly on the BBC. He is the author of numerous books, reports and studies, including the best-selling 'The Graduate Jobs Formula'. In recognition of his writing and research, Paul was awarded a Fellowship of the British Royal Society of Arts.



To book your place, please [complete the form](#) and email to conference@ipf.org.uk